

Sw & Co gub 04 11 91

179

Neil Rodger (1941-)

FARM, EASTERN CAPE

signed and dated '77
watercolour
16 by 25cm

R 400 - 600

180

Louis Khela Maqhubela (1939-)

AFRICAN DREAM

signed and dated '73
pastel
54 by 54cm

R 800 - 1200

181

Ben Macala (1938-)

WOMAN WITH PUMPKIN

signed
charcoal and watercolour
101 by 62cm

R 400 - 600

182

William Kentridge (1955-)

WARTHOG IN THE TRAFFIC

Etching, signed and dated '86 and numbered 14/20 in pencil in the margin
15,5 by 13cm

R 400 - 600

183

Solomon Leopeng (20th Century)

MAN WITH BALACLAVA; SOCCER PLAYER

both signed and dated '78 and inscribed 'Mabopane'
pencil
54 by 34cm and 54 by 40cm

(2)
R 200 - 300

184

Manolis Calliyannis (1923-)

HEAD

Etching, signed and numbered 34/27 in pencil in the margin
9 by 12cm

R 30 - 50

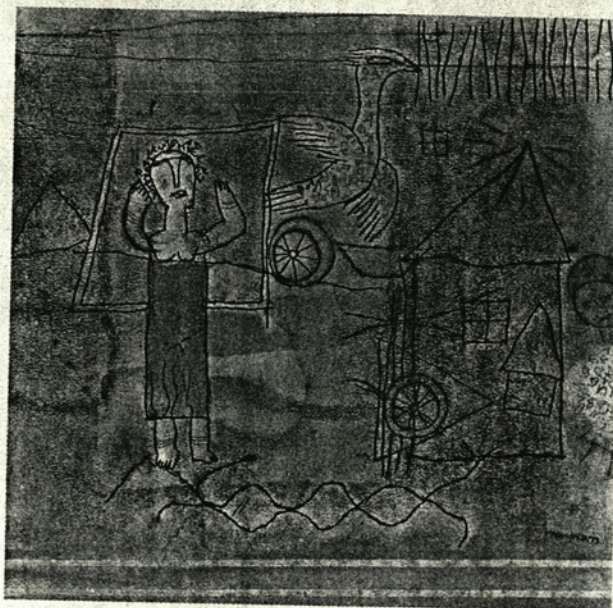
185

Martine Margoles (20th Century)

ONS VIR JOU ...

signed and dated 1987
painted cardboard collage
37 by 48cm

R 300 - 500



180

186

Giulio Tambellini (20th Century)

THE UZZ

Etching, signed and dated '87, numbered Proof 1/3 and inscribed with the title in pencil in the margin
38 by 42,5cm

R 400 - 600

187

Karel Nel (1955-)

IN-TACT

Coloured cast paper on a silkscreen of 8 colours, signed and dated '86, numbered A.P IV/X, printed on Fabriano paper
52,5 by 45cm

Commissioned by the Johannesburg Art Gallery for its Centenary Portfolio, published by the Brenthurst Press in conjunction with the Caversham Press

R 1200 - 1800

188

South African School (20th Century)

DOG IN AN INTERIOR

pastel
74 by 101,5cm

R 600 - 900

189

Errol Boyley (1918-)

FARM BUILDINGS

signed
on canvas board
49 by 64,5cm

R 1000 - 1500